

Universal SEND Services Programme

Whole School SEND

- Whole School SEND (WSS), as part of nasen, leads the **Universal SEND Services Programme (USS)** on behalf of the DfE.
- The WSS team comprises of experienced **SEND leaders** from across the education sector, including mainstream, special settings and local authorities.
- The work of WSS is based on **5 key principles**:
 - Collaboration and Knowledge Exchange
 - Every Leader a Leader of SEND
 - Inclusive Pedagogy – Universal First
 - Regional Expertise for National Impact
 - Equity, Evidence, and Sustainability



Universal SEND Services programme

- This contract brings together SEND-specific CPD and support for the school and Further Education (FE) workforce to improve outcomes for children and young people, through one programme.
- The contract commenced in May 2022 and will run until Spring 2027.

Aims:

To improve the quality of teaching to children and young people with SEND, particularly in mainstream settings (both schools and further education).

To ensure needs are identified and met earlier and more effectively, and that preparation for adulthood is delivered from the earliest stages, to support effective transitions, including into employment.

Regional SEND Leadership



1 Head of WSS

1 National SEND
Leader

9 Regional
SEND Leaders

15 Deputy
Regional SEND
Leaders

9 Regions

3 National Co-
ordinators

Regional SEND Leadership

South West

Emma Vyvyan
Jeanette Savage
Libby Lines

South East

Katherine Walsh
Tina Harvey
Lisa Bond
Timothy James

East of England

Alistair Crawford
Heba Al-Jayoosi
Laura Mills

West Midlands

Alison Parr
Conrad Bourne

East Midlands

Emily Walker
Jane Starbuck

London

Amelie Thompson
Rebecca Gonyora
Matt McArthur

North East

Rachel
Hargreaves
Sarah Watson

North West

Dawn Cranshaw
Jo Ellis
Nicola Cassidy

Yorkshire and The Humber

Cheryl Gaughan
Nicole Dempsey

Head of WSS

Amanda Wright

National SEND Leader

Malcolm Reeve

National SEND Co-ordinators

Alison Betts
Erica Wolstenholme

National Delivery Co-ordinator

Caroline Sutton-Reid

Universal SEND Services Programme

Open access for all
Participation through recruitment
Participation by invitation



WSS Regional SEND Leads

Regionalised model of delivery and development, responsive to local context through regional team of experienced, school-based SEND leaders in each region of England.

nasen



Online SEND CPD units

30 mins online learning courses to support workforce confidence in meeting range of barriers to learning. Certificate system for completion of units. 20 units currently available.

nasen, ETF, AET



Specialist Spotlight, webinars & regional conferences

Online discussion sessions to facilitate collaborative problem solving. Each session is attended by a specialist, including Educational Psychologists, Speech Therapists. Webinars, responsive to the needs of the sector. One, in-person, conference in each region.

nasen ETF



'Inclusive Practice Hub'

Online searchable tool that disseminates Year 1-3 research findings from the Action Research and Lesson Study projects in addition to case study examples from across the Universal SEND Services programme.

nasen



PD Groups & Communities of Practice

Group sessions facilitate peer-to-peer reflection, challenge and support for practitioners to improve practice and develop strategic, inclusive provision across settings. Professional development groups empower participants to implement school improvement project and include 1:1 coaching sessions.

nasen, ETF



Autism training

High-quality, autism-focused training for the workforce across all settings. Five new autism online units. Autism resource suite. 3 training packages including recorded webinars and ready-made slides to support the implementation of Autism Awareness.

nasen



Peer Mentoring & College Peer Reviews

Support for school leaders in mainstream schools where Ofsted has rated 'inclusion' as 'Needs Attention'. College SEND Reviews conducted by Centres for Excellence in SEND.

nasen, ETF



Community Join-Up

National and regional network meetings to support the sharing of intelligence, practice, and system learning to improve inclusive practice and outcomes for children and young people with SEND.

nasen, ETF

Overview

Impact

Inclusive practice in m/s

Inclusive practice in m/s

Inclusive practice in m/s

Inclusive practice in m/s

Inclusive practice in m/s

Inclusive practice in m/s

Inclusive practice in m/s

Cross sector, phase, organisational relationships

Cross sector, phase, organisational relationships

Workforce confidence

Workforce confidence

Workforce confidence

Workforce confidence

Workforce confidence

Workforce confidence

Early and accurate identification of need

Early and accurate identification of need

Leadership of SEND

Leadership of SEND

Leadership of SEND

Leadership of SEND

Identify and share good practice

Identify and share good practice

Preparation for Adulthood

Preparation for Adulthood

Identify and share good practice

Preparation for Adulthood

Preparation for Adulthood

Preparation for Adulthood

Preparation for Adulthood

Online SEND CPD Units

- Online e-learning units exploring the most common **barriers to learning**, regardless of age, label or area of need.
- Provides clear **guidance and strategies** to enable practitioners to adapt their teaching to meet the needs of a wider range of learners.
- Developed in **partnership** with young people, specialists and mainstream practitioners.
- Each unit can be completed in **under an hour**. No need to complete units in a single session – progress is saved.
- **Badges and certificates** awarded for completion of multiple units.



Online SEND CPD Units Dashboard

This series of online Continuing Professional Development (CPD) units are designed to support those who work with children and young people in schools and further education settings to develop inclusive practices. Developed in partnership with Real Group, these online units will build on the learning from our Ambitious About Inclusion modules, these free to access online CPD units can be accessed at a time to suit you.

As you advance through this series of units, you will earn badges reflecting your progress and certificates of completions corresponding to your highest achieved tier. Certificates will be available for direct download below.



Explore the units [here](#)

Specialist Spotlight Sessions



- Interactive online CPD sessions
- Delivery and practical approaches shared by subject specialist
- Delegates share good practice, experiences and ask questions
- Network with and learn from colleagues from across the country
- Facilitated by WSS National Delivery Coordinator and subject experts
- Rolling programme of sessions across the year, covering multiple areas

Book onto sessions [here](#)

"It's free, manageable for time and had so many useful links shared by experts. Invaluable!"

"These sessions are great. It's a fabulous way to extend my knowledge beyond the confines of my school experience. Different practitioners and experts from around the country."

Webinars and Webinar Recordings



- Webinars responding to the needs of the sector, sharing guidance from specialists
- Access to recordings of all previous webinars
- Led by National Coordinators, regional leads, external speakers
- Previous webinar recordings available include:
 - Leading **Specialist Spaces** in Mainstream
 - Meeting Needs and Building Inclusion Through **Assistive Technology**
 - **Inclusive Leadership** and Management in Schools
 - **SEND CPD**: Planning the Year Ahead with WSS
 - Preparing Learners with SEND for **Adulthood**
 - Ensuring an **Ambitious Curriculum** for Learners with SEND
 - Meeting **Increasing SEMH Needs** within Mainstream Settings
 - Maximising **Teaching Assistant** Impact (EEF)
 - Teaching for **Mastery in Maths**

“High quality presentation, including links to research and the all important personal stories. Lots of useful practical advice. Really inspirational! Many thanks!”

[Book webinars](#) and [access recordings](#)

Professional Development Groups



Regional and national groups, supporting practitioners to engage in evidence-informed, SEND focussed, school/setting improvement projects:

Tailored meetings with a Regional Lead/National Co-Ordinator to support:

- Identify an improvement project
- Design an implementation plan
- Implement the plan
- Gather evaluation data
- Evaluate outcomes and identify impact for real change

With opportunities for 1:1 professional conversations with a WSS regional leader/national co-ordinator

Find out more [here](#)

Peer Mentoring



- Support to **school leaders**
- Mentoring for schools where **Inclusion** is rated as '**Needs Attention**'
- Delivered by Regional SEND Leaders
- Two schools in each region
- Focus on mainstream
- Six sessions across the year

Contact WSS [Regional SEND Leader](#) or;

- Malcolm Reeve, WSS National SEND Leader: malcolmr@wholeschoolsend.org.uk

Community Networks

- Strengthen **community join-up for SEND**
- LAs, employers, schools, FE providers, PfA networks, national bodies, parent groups, young people.
- **Regional network** in each WSS region, chaired by WSS Regional SEND Leader
- **National network forum**, chaired by WSS National SEND Leader
- Each group will meet three times a year
- Including representations from other DfE SEND contract holders

Contact your WSS **[Regional SEND Leader](#)** or;

- Malcolm Reeve, WSS National SEND Leader: malcolmr@wholeschoolsend.org.uk

Inclusive Practice Hub



- **Online searchable tool** that disseminates Year 1-4 **research findings** from the Action Research and Lesson Study projects, in addition to **case study examples** from across the Universal SEND Services programme.
- Supports the adaptation of **proven strategies** across mainstream educational settings, driving meaningful and sustainable improvements in SEND practice.
- The tool can be used to find and explore the **impact** of different practice and approaches

Explore the Inclusive Practice Hub [here](#)

Autism CPD



High-quality, autism-focused training for the workforce across all education settings.

- Three [Train the Trainer](#) packages for teachers and leaders to deliver Autism Awareness and Inclusion training in their settings.
- Five new [autism online units](#)
- An autism [resource suite](#)

Neurodiversity CPD

High-quality, neurodiversity-focussed training for the workforce across all education settings.

- Launching in **Autumn 2026!**
- 5 new Inclusive Practice online neurodiversity units
- Neurodivergent Train-the-Trainer packages

SEND Interactive Toolkits



The screenshot displays the SEND Interactive Toolkits website. At the top, there are two navigation tabs: 'SEND LEADERS' and 'SENCO HEADTEACHERS'. Below these are two main sections, each titled 'LEADERSHIP & SENCO TOOLKIT'. Each section contains a brief description of the toolkit's purpose. The main content area is divided into four columns: 'SENCO', 'STATUTORY FRAMEWORK', 'ESTABLISHING AN INCLUSIVE CULTURE', and 'IDENTIFICATION OF NEED'. Each column lists various resources such as 'ONLINE CPD UNITS', 'TEACHER HANDBOOKS', 'WEBINARS', and 'INDUCTION PACKS'. At the bottom, there are navigation buttons for 'REGISTER AS A MEMBER AND OPT IN TO E-NEWS', 'UPCOMING EVENTS', and logos for 'nasen' and 'WholeSchool SEND'.

Interactive resource directories tailored for a range of roles.

The toolkits make it easy to find the information and resources from Whole School SEND for **specific areas** of interest.

Toolkits available for:

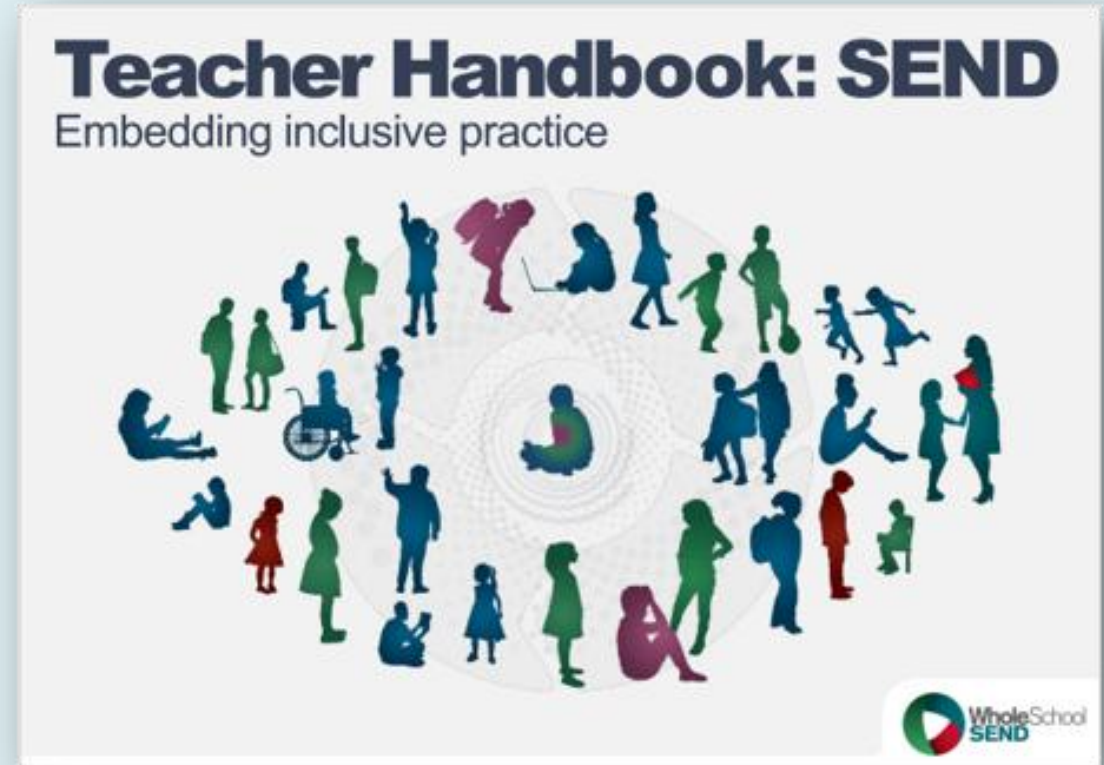
- Leaders and SENCOs
- Teachers
- Support Staff
- Co-production and partnership

Explore the toolkits [here](#):

The Teacher Handbook: SEND



- A comprehensive SEND and inclusion resource for **teachers**.
- The Handbook brings together practical examples of **high quality, inclusive teaching** – placing a focus on removing barriers to learning, getting to know and understand individual learners and bringing the graduates approach to life.



Access the handbook [here](#)

Review Guides



Early Years, FE Settings



Executive Head teachers,
MAT SEND Leaders, Trust
Boards



Governors in all schools



Headteachers



SENCOs,
Senior Leaders



Individuals, or whole
staff, in all schools

Explore the guides [here](#):

Other Resources



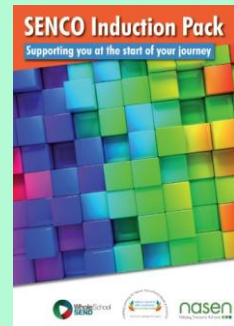
ITT and Mentor Resources

Access [here](#)



SEND Development Pathways

Access [here](#)



SENCO Induction Pack

Access [here](#)



Parent Leaflets

Access [here](#)



Condition-Specific Videos

Access [here](#)

Stay in Touch



Find out more and join our member community



www.wholeschoolsend.org.uk



@whole-school-send